



MUSICPLAY MENTORSHIP

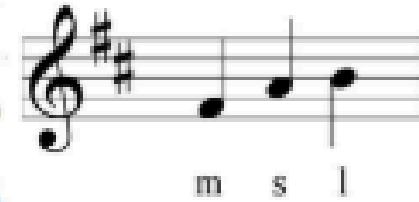
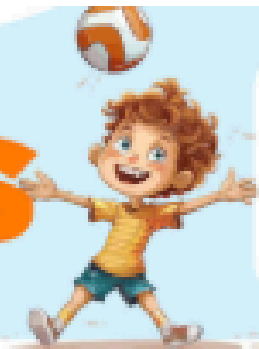
with Stacy Werner

SESSION #1 – GETTING STARTED AND CORE SKILLS

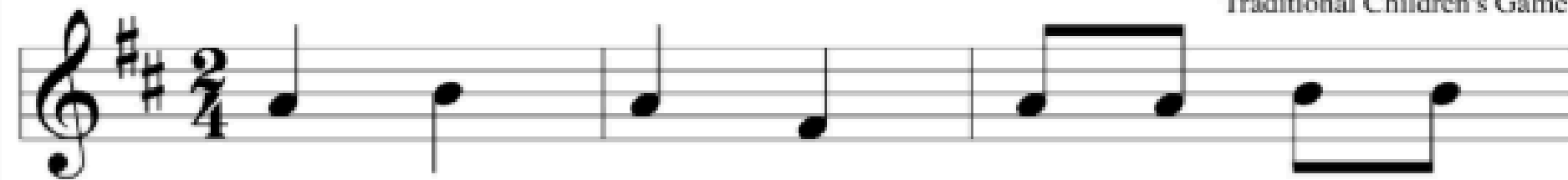


START WITH A GAME...

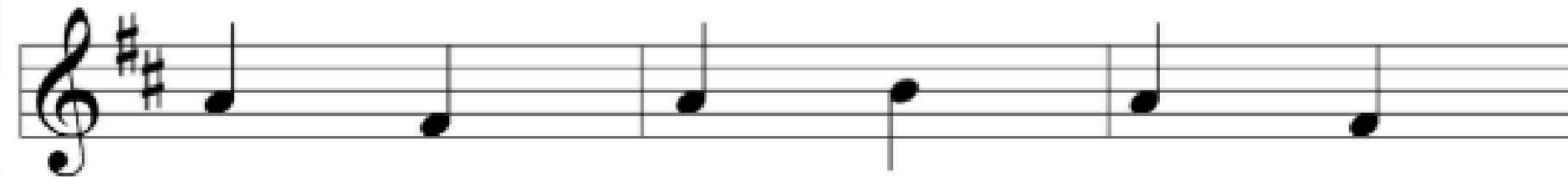
Plainsies, Clapsies



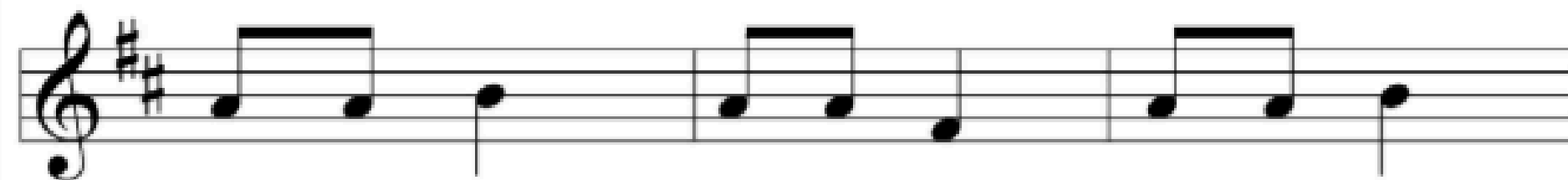
Traditional Children's Game



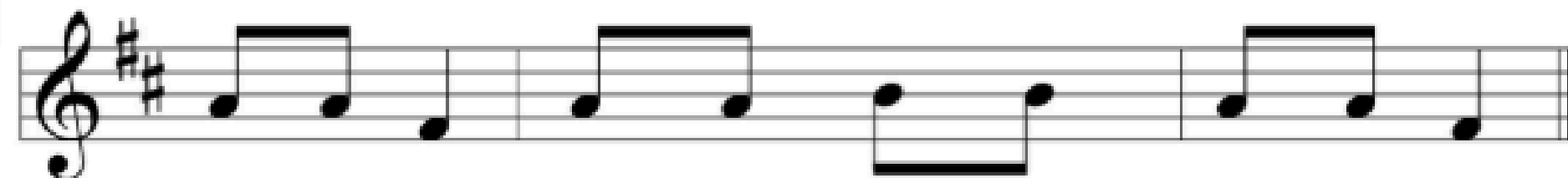
Plain - sies, clap - sies, Twirl a - round to



back - sies. Right hand, left hand,



Toss it high, toss it low. Touch your knee,



touch your toe, Touch your heel and through you go.

Games are at the heart of the Musicplay program. It's so important for students to experience music and play before we begin labeling concepts – a process known as the “Sound Before Symbol” approach.

LOGGING IN:

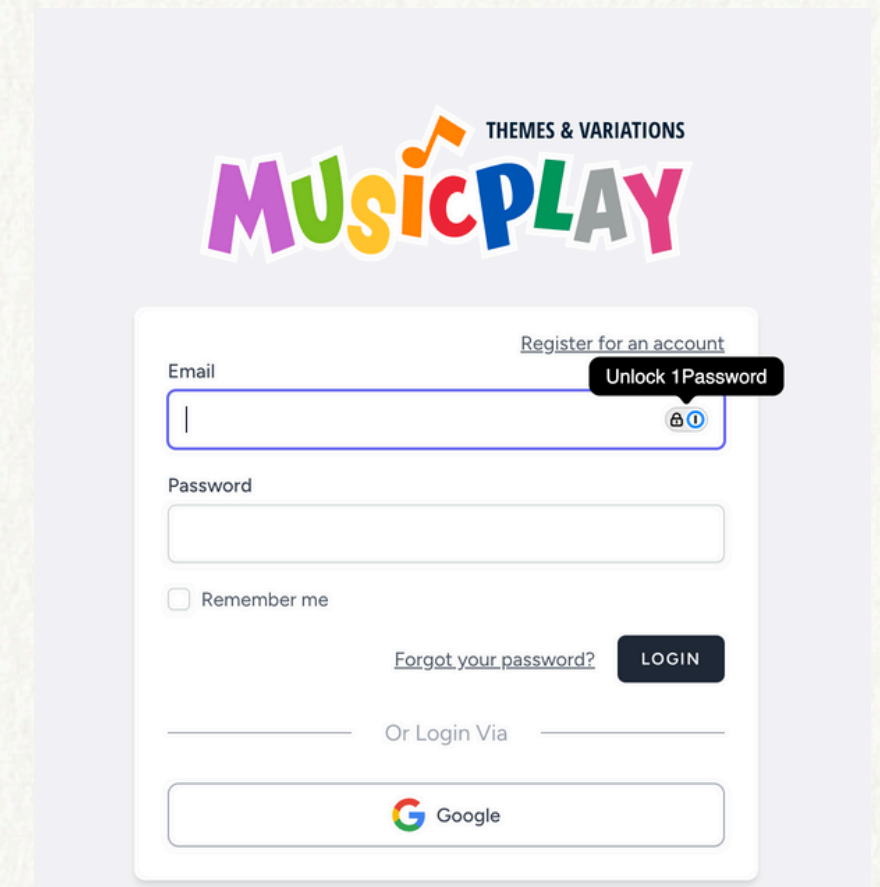
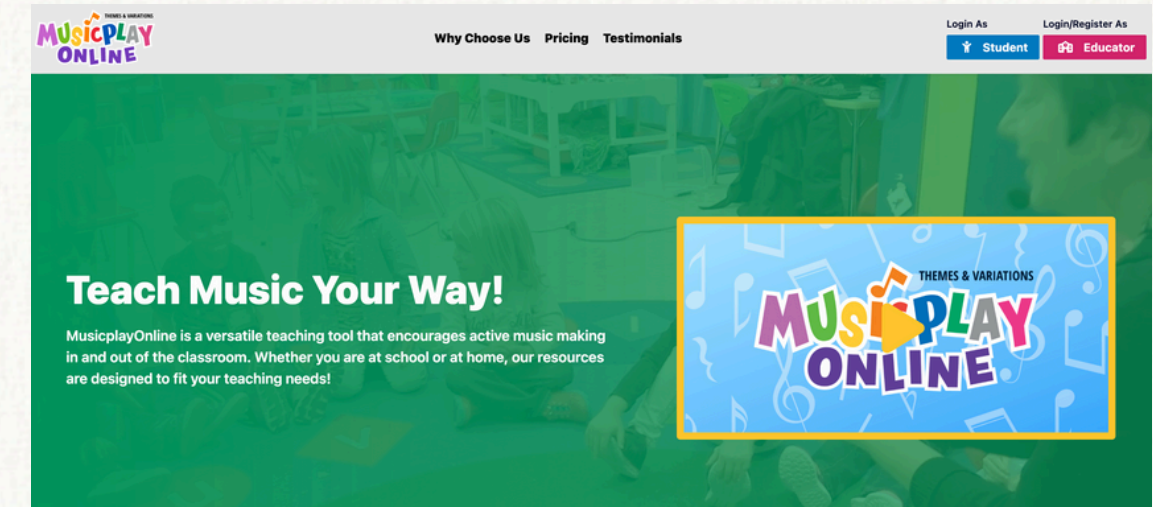
To log in to MusicplayOnline, go to musicplayonline.com.

Find "Login/Register as Educator" in the top right corner of the window and click on the Educator button. If you are an existing user, enter your email address in the white box and click Submit. Do NOT click Register, as that will create a new account.

On the next screen, there are two ways to log in:

1. Enter your password in the Password box and click Login OR
2. Log on with your Google account information by clicking on the Google button.

How to Login: <https://help.musicplay.ca/how-do-i-create-a-musicplayonline-account>




STUDENT ACCESS

- For students to log in, they must have the Student Code generated from their teacher's account.
- Once a student has their student code, go to musicplayonline.com.
- Find "Login as Student" in the top right corner of the window and click on the Student button.
- Enter the Student Code in the white box, then click on Access some fun.
- More info: [How to Generate a Class Code](#)

Student Access Code

Navigate to

 <https://musicplayonline.com/>

Login as

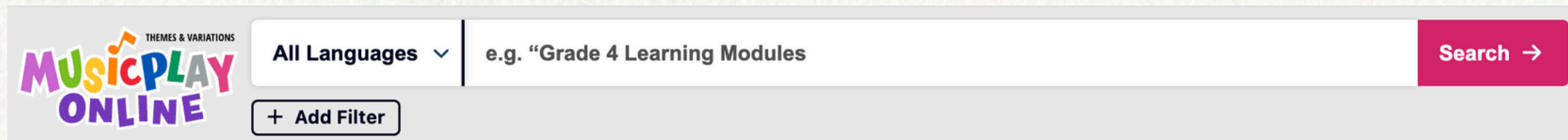
Click on "Student"

Enter the code

In the text field, enter the code:

SEARCH TOOL

- You can search for content across the entire MusicplayOnline platform or within a specific section.
- Searching within a section often gives more precise results because the search is more targeted.
- To search the entire platform: Go to the Discover section.
- Type your search term(s) in the white field at the top of the page.
- Click the Search button or press Enter on your keyboard.
- To search within a section: Click on the desired section in the left-hand menu.
- Type your search term(s) in the white field at the top of the page.
- Click the Search button or press Enter on your keyboard.
- More info: [How to Use MusicplayOnline's Search Engine](#)



The screenshot shows the search interface of MusicplayOnline. On the left is the logo "MusicPLAY ONLINE" with "THEMES & VARIATIONS" above it. To the right of the logo is a search bar with a dropdown menu set to "All Languages" and a search input field containing the text "e.g. 'Grade 4 Learning Modules'". Below the search bar is a button labeled "+ Add Filter". To the right of the search bar is a pink button labeled "Search →".



SEARCH FILTER

- You can add filters to narrow search results.
- Click "+ Add Filter" below the search bar.
- A filter window will appear on the right with different options.
- Click the options that apply – more choices may appear for further refinement.
- Results update instantly as you choose filters.
- Close the filter window by clicking "Close Filters".
- To remove a filter, click the X next to the term.
- To remove all filters, click "Clear All Filters".

Let's Narrow Things Down Close Filters X

Rhythm Tone Set Grades

Months / Weeks Song Type

Themes Concepts

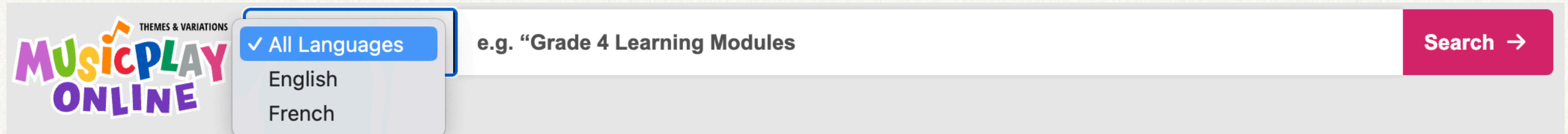
Curriculum Links Holidays

Chord Symbols Chords Creator

Orff/Kodaly

ACCESSING FRENCH CONTENT

- To access French content, click the "All Languages" button next to the search bar.
- Change it to French.
- More info: [How to Find French Resources on MusicplayOnline](#)





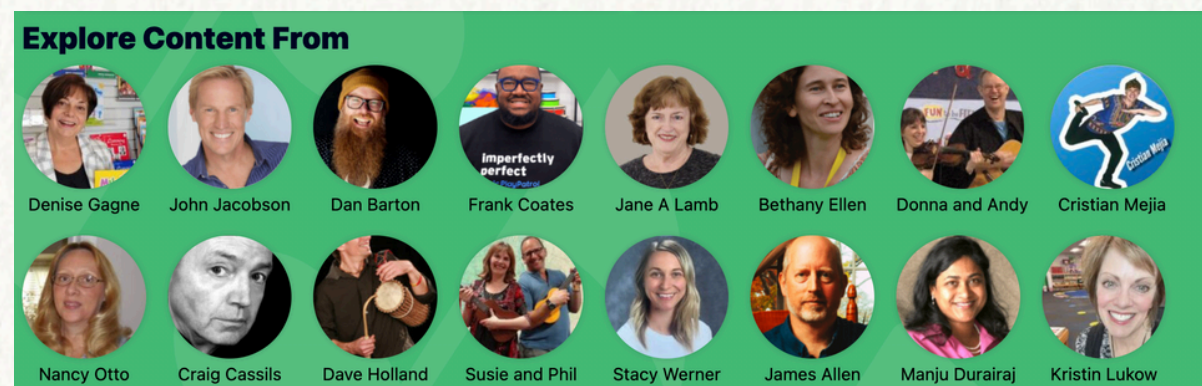
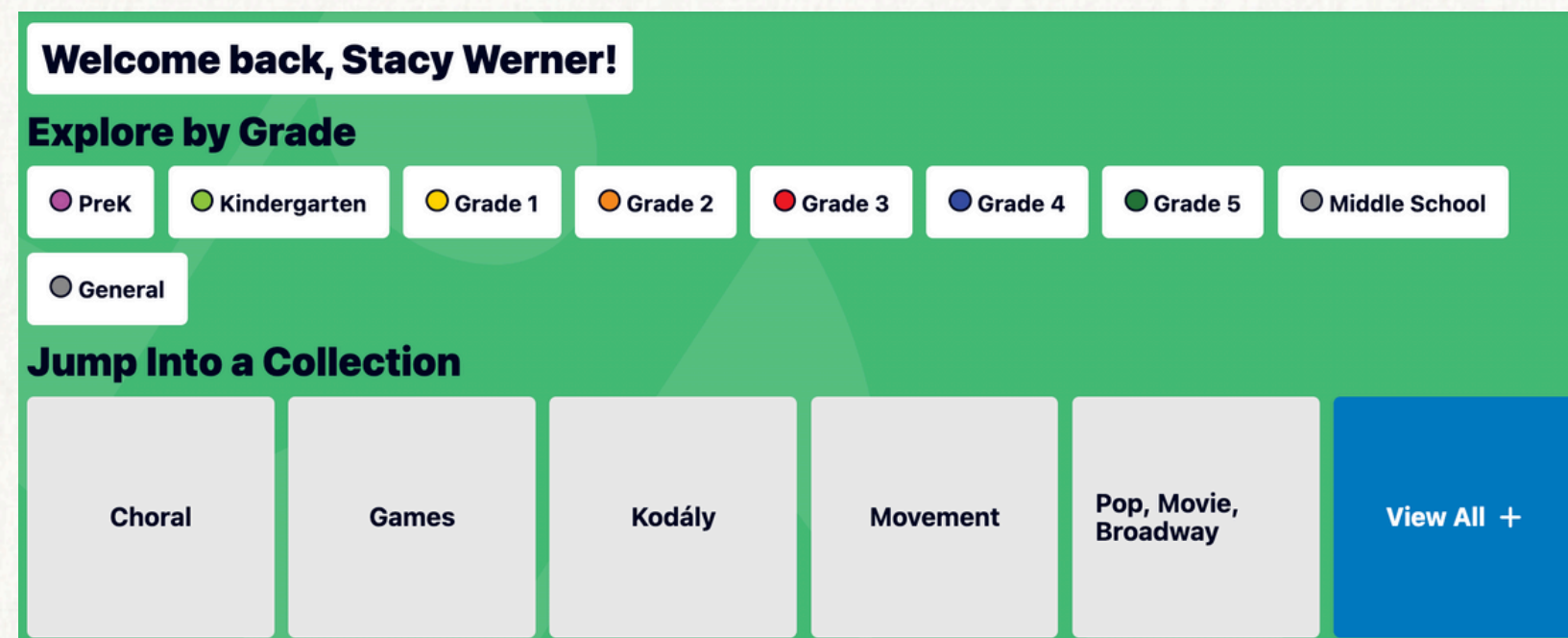
SECTIONS OF MUSICPLAY ONLINE

NAVIGATING THE PLATFORM

DISCOVER

The Discover page is the landing page for the MusicplayOnline platform. In addition to searching the entire site, it provides quick links to:

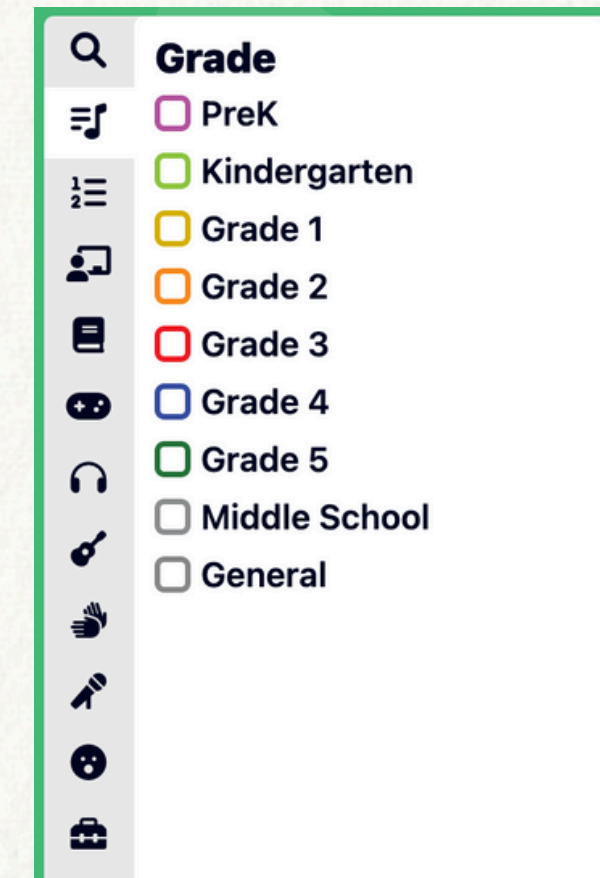
- Grade
- Collection
- Content Creator
- Lessons for the current month
- New or recently updated content
- Discover Landing Page Info: <https://help.musicplay.ca/how-to-use-musicplayonlines-search-engine>



SONG LIST

- The **Song List** contains every song on MusicplayOnline plus related resources.
- May include: tone set, rhythm, thematic category, and content creator.
- Language is shown in a box on the left of each song.
- Coloured dot indicates the song's grade level.
- Filter by grade or search using the white box at the top.
- Click Search or press Enter to search.
- Song List Information:

<https://help.musicplay.ca/song-list>



	Song	Tone Set	Rhythm	Notes	Creator
EN	1. Dooby Dooby Dooby Doo	-	-	-	MUSICPLAY ONLINE
EN	2. Mountaintop Monster	-	-	-	MUSICPLAY ONLINE
EN	3. Little Red Wagon	-	-	-	MUSICPLAY ONLINE
EN	4. Snail, Snail	m sl	♪ ♪	Orff	MUSICPLAY ONLINE
EN	5. Sam the Robot Man	-	-	-	
EN	6a. Lesson 1 Poems and Extras	-	♪ ♪	-	MUSICPLAY ONLINE

MY LISTS







- My Lists lets you save and organize content from MusicplayOnline.
- Use the Add to My Lists button on eligible content to save it.
- Organize saved items into folders within My Lists.
- We'll explore My Lists in detail during next week's Planning webinar.

The screenshot shows the 'My Lists' interface on MusicPlay Online. At the top, there is a search bar with 'All Languages' and a search input containing 'e.g. "Grade 4 Learning Modules"'. Below the search bar, there are filters for 'Content Type: List' and '+ Add Filter'. The main content area displays a table of lists with columns for Privacy, Title, Created On, and Actions. The table lists several lists for November Week 5, including Grade 4, Grade 3, Grade 2, Grade 1, Kindergarten, and Pre-K. A sidebar on the left shows 'Folders' with 'November Week 5 Modules' and 'Substitute Lessons'. The MusicPlay Online logo is visible in the top left and bottom right.

Privacy	Title	Created On	Actions
<input type="checkbox"/>	Grade 4 November Week 5	Aug 7th, 2025	
<input type="checkbox"/>	Grade 3 November Week 5	Jul 30th, 2025	
<input type="checkbox"/>	Grade 2 November Week 5	Jul 28th, 2025	
<input type="checkbox"/>	Grade 1 November Week 5 Module	Jul 25th, 2025	
<input type="checkbox"/>	Kindergarten November Week 5 Module	Jul 24th, 2025	
<input type="checkbox"/>	Pre-K November Week 5 Module	Jul 23rd, 2025	











LEARNING MODULES

- Organized by grade level (Pre-K to Middle School) plus special thematic lessons.
- Provide a full curriculum and weekly lesson plans.
- Each module includes a 45–60 minute weekly lesson aligned with a typical school year.
- Each lesson contains:
 - Brief activity description
 - Suggestions for extra activities
 - Lesson objectives
 - Teacher’s lesson guide
 - MPO resources for each activity
- Includes "How to Use MPO" orientation videos.
- Sort modules by grade or theme using the sub-categories on the left menu.
- Tutorial video: [Watch here](#)

EN	<input type="radio"/> Christmas Boomwhacker Selections	-	Any, Any Week	
EN	<input checked="" type="radio"/> Grade 1 Back To School – Lesson 2	Grade 1	August, Any Week	
EN	<input checked="" type="radio"/> Grade 1 Back To School – Lesson 5	Grade 1	August, Any Week	
EN	<input checked="" type="radio"/> Grade 2 Back To School – Lesson 1	Grade 2	August, Any Week	
EN	<input checked="" type="radio"/> Grade 2 Back To School – Lesson 2	Grade 2	August, Any Week	
EN	<input checked="" type="radio"/> Grade 2 Back To School – Lesson 3	Grade 2	August, Any Week	

UNITS SECTION

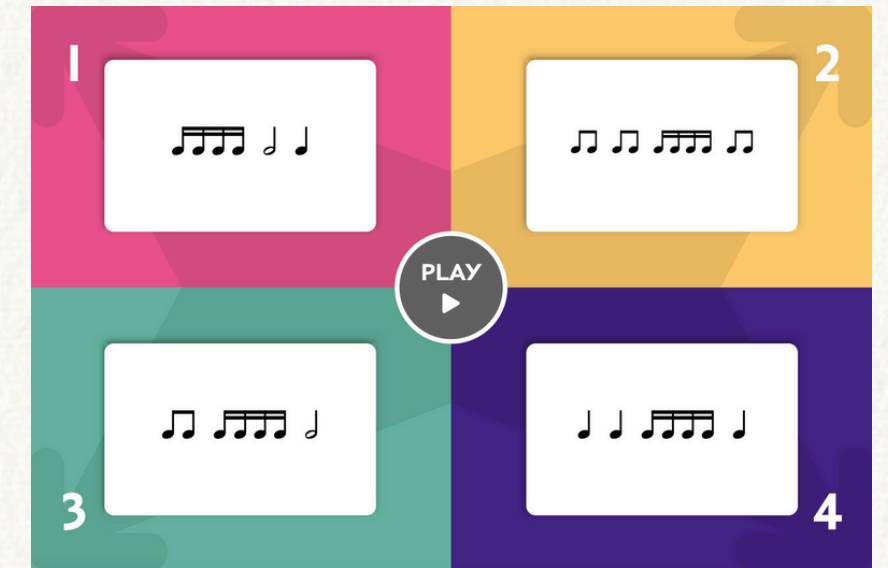
- Units group activities and resources by theme or topic.
- Displayed alphabetically on the Units home page.
- Search by sub-category (left menu) or by keyword (search bar at top).
- Each unit shows its language, sub-category, and content creator.
- Some unit elements may also appear in Learning Modules, but full units are grouped here.
- Tutorial video: [Watch here](#)

	Unit Category
	<input type="checkbox"/> Dance & Move
	<input type="checkbox"/> Festivals & Holidays
	<input type="checkbox"/> Listening Units
	<input type="checkbox"/> Instruments
	<input type="checkbox"/> Programs & Musicals
	<input type="checkbox"/> Theory
	<input type="checkbox"/> Games & Centers
	<input type="checkbox"/> Our Musical World
	<input type="checkbox"/> Orff
	<input type="checkbox"/> Literacy
	<input type="checkbox"/> Careers in Music

EN	A Place in the Choir	-	
EN	Advent	Festivals & Holidays	
EN	Alphabet Songs and Activities	Literacy	
EN	American Song: A Patriotic Celebration	Programs & Musicals	
EN	Armenia	Our Musical World	
EN	Articulation	Theory	
EN	Australia	Our Musical World	
EN	Austria	Our Musical World	

GAMES SECTION

- The Games section has interactive activities to test student concept knowledge.
- Games must be played or projected on a device with a screen, or on individual devices.
- Listed alphabetically but can be filtered by Single or Multiplayer (left menu) or searched by keyword.
- Each game includes a “How to Play” section.
- Most games have multiple levels and/or concepts.
- Tutorial video: [Watch here](#)



LISTENING KITS

- Listening Kits are divided into five numbered kits that match grade levels.
- Includes additional Listening Extras not in the main kits.
- Main page can be sorted by kit number (left menu) or searched by keyword.
- Resources within each kit are listed in sequential order.
- Tutorial video: [Watch here](#)
















MUSICPLAY

Musette

Johann Sebastian Bach (1685-1750)

Directions: As you listen, think about the music and try to answer as many of the questions as you can. When the selection ends, discuss your answers.

1. What instrument families do you hear?
Strings  Brass  Woodwind  Percussion 
2. What instruments do you hear?
3. What is the tempo of the music?
slow very fast
largo *presto*
4. Is the music quiet or loud? (dynamics)
very quiet very loud
pp *ff*
5. Is the music smooth and flowing or separated and detached?
 smooth  separated
6. Describe the mood of the piece.
      
7. How does this music make you feel?



www.musicplay.ca

15. Overture from The Nutcracker

Play Along

Jouer avec Tocar con

Section A B C Or A B C



INSTRUMENTS

- The Instruments section lists songs playable on various elementary instruments.
- All resources are listed alphabetically on the main page.
- Can be filtered by instrument using options next to the left menu.
- Each instrument has sub-categories like difficulty levels, specific instruments, or content creators.
- Each song includes multiple resources such as videos, accompaniment tracks, arrangements, choreography videos, and more.
- Tutorial video: [Watch here](#)

Ode to Joy
Coloured

intro 2 bars

Ukulele chords: G, C, E, Am, F

© 2019 Themes & Variations For use of www.musicplayonline.com subscribers only - any other use is prohibited - Page 1

Left Hand Thumb Right Hand

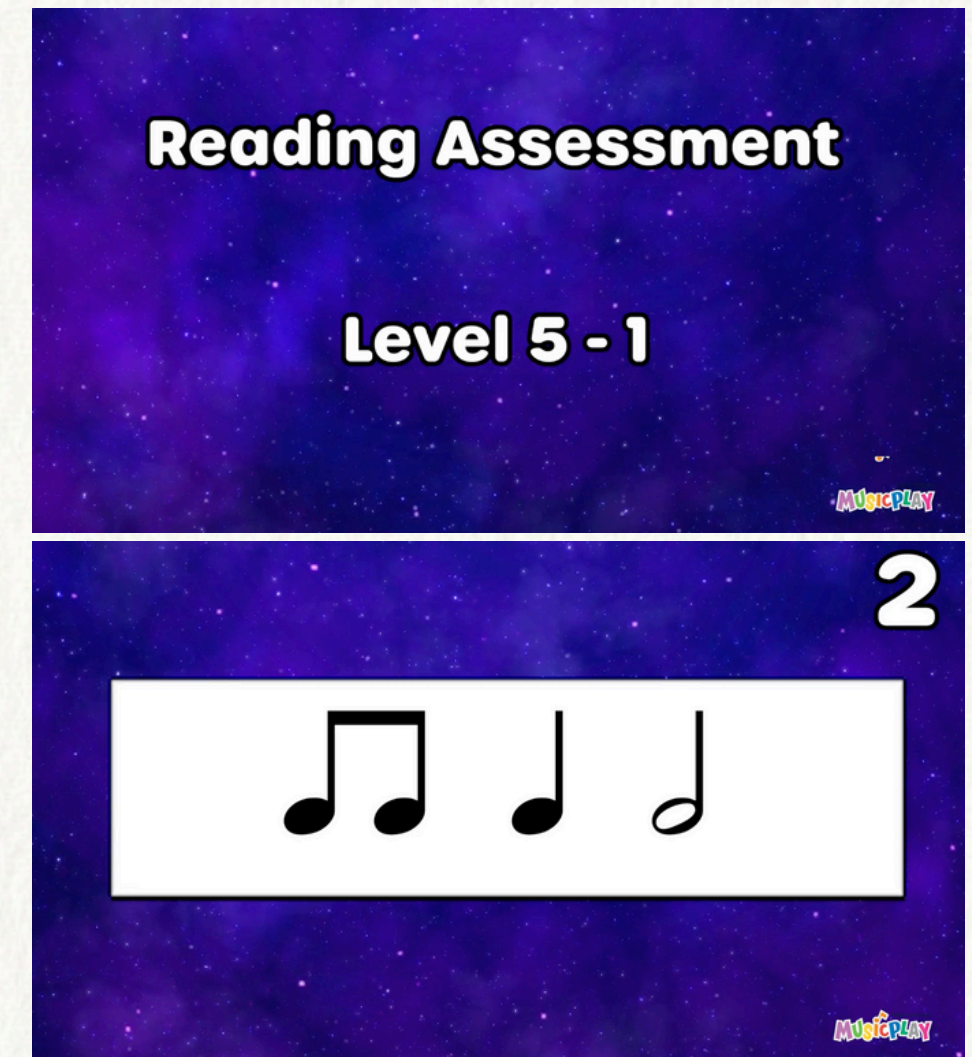
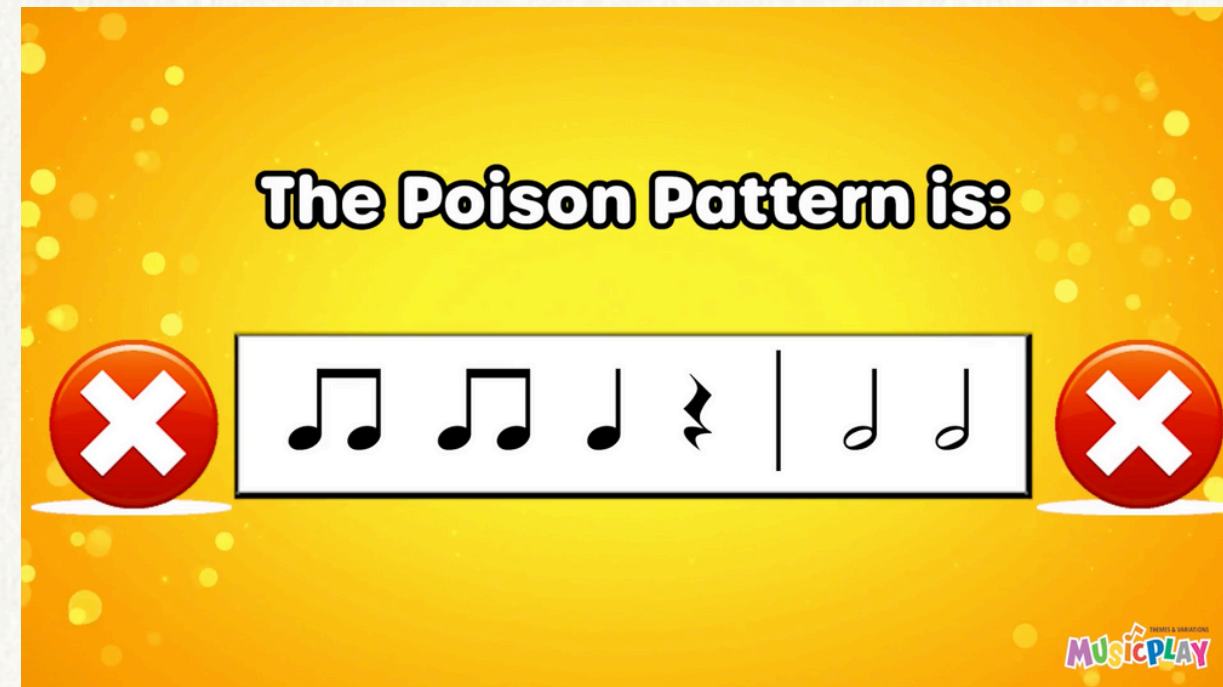
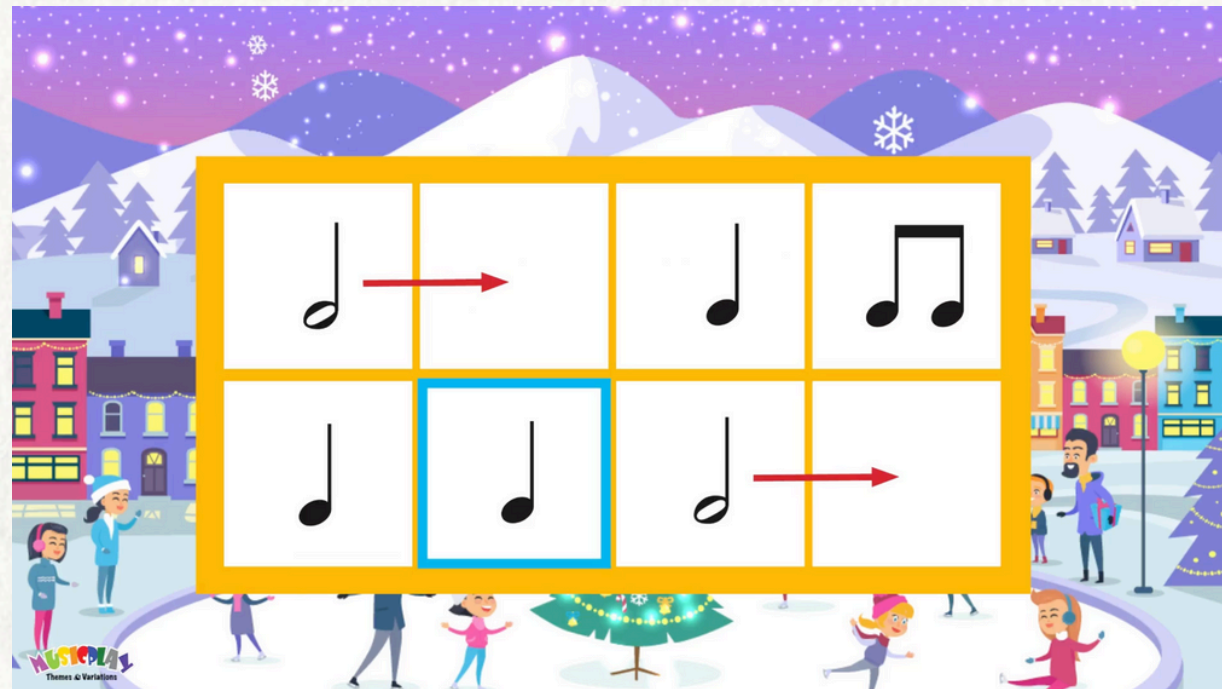
Star - light, star bright,
first star I see to - night,
Wish I may, wish I might,
have the wish I wish to - night.

Edge (Rim) Middle (Top)

Right left, right, left, right left, right, left

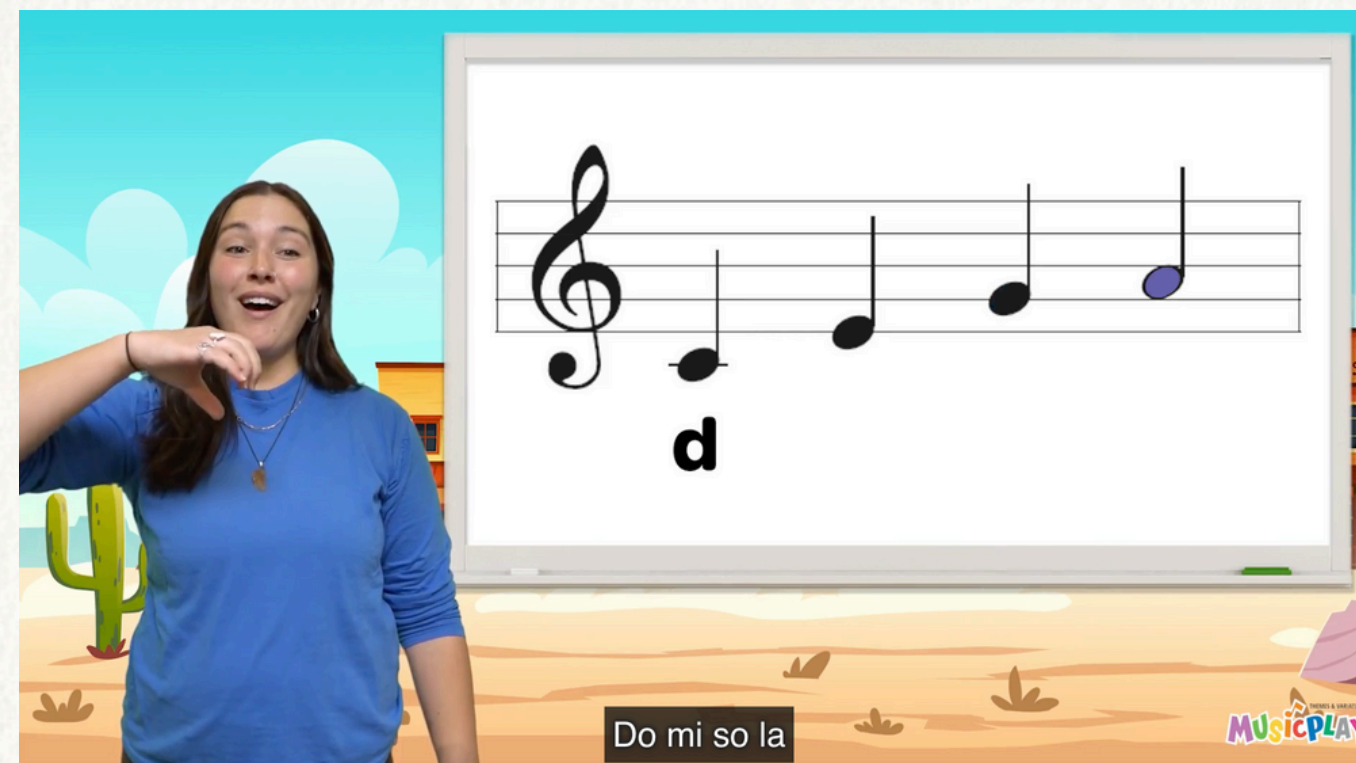
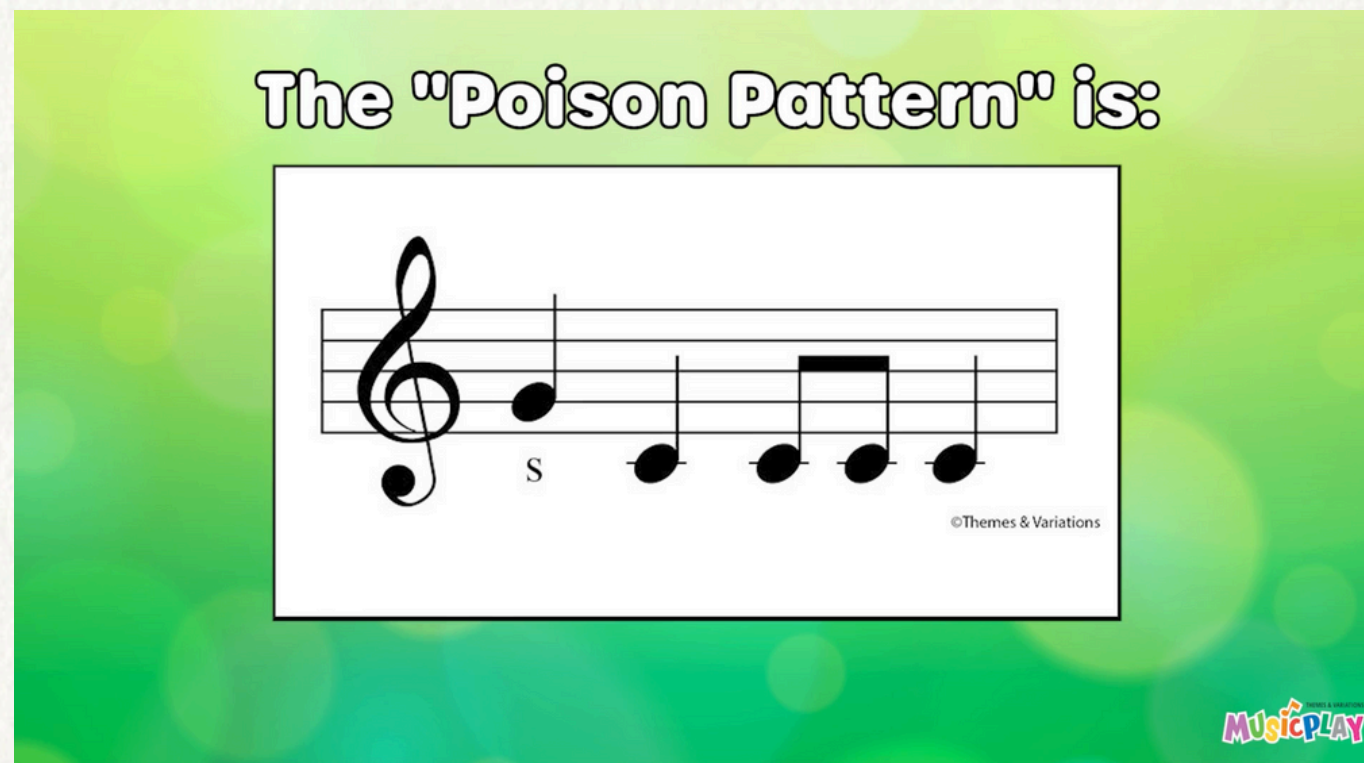
RHYTHM PRACTICE

- The Rhythm Practice section has resources for teaching and practicing specific rhythms.
- Each rhythmic component may include percussion videos, echo rhythms, games, assessments, and more.
- Tutorial video: [Watch here](#)



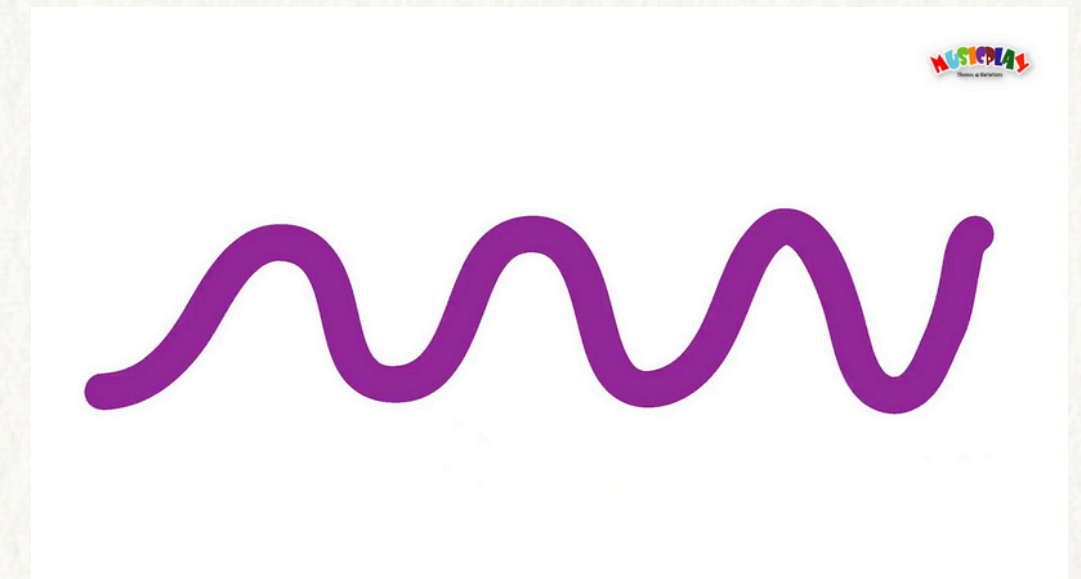
SOLFA PRACTICE

- The Solfa Practice section has resources for specific tone sets in the Solfege method.
- Each tone set may include videos, echo singing, notation, games, flashcards, and assessments.
- Tutorial video: [Watch here](#)



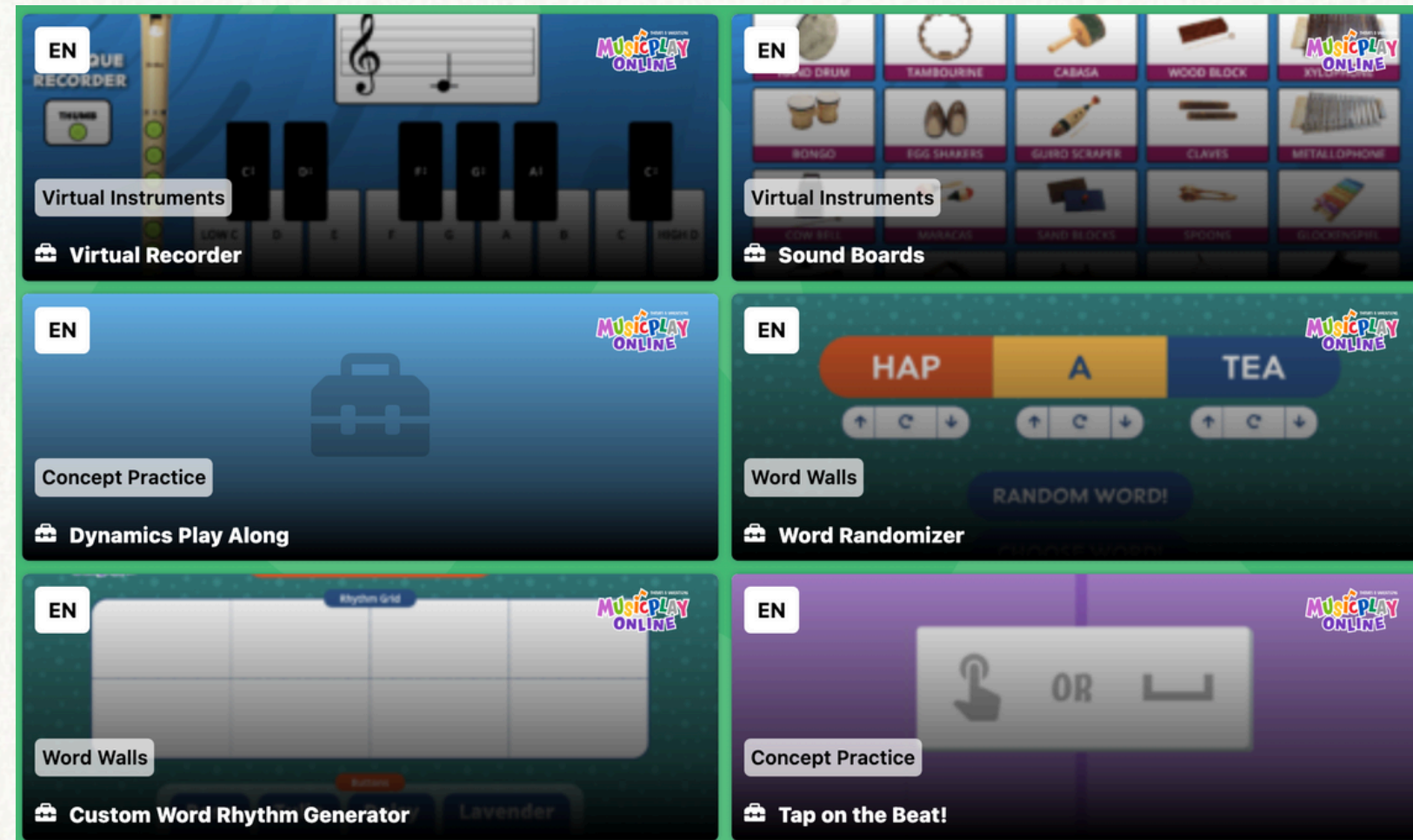
VOCAL WARM-UPS

- The Vocal Warmups section has resources to prepare student voices for singing.
- Includes Bobo the tennis ball activities: Bobo, Bobo with Tone Ladder, and Warmups.
- Yoga for Voice combines movement with vocal exercises.
- Each category offers multiple exercises.
- Tutorial video: [Watch here](#)



TOOLBOX

- The Toolbox has activities and resources to practice concepts from MusicplayOnline.
- Includes tools like tuners, metronome, and virtual instruments to support accurate playing and singing.
- Categories include:
 - Compose
 - Concept practice
 - Tuners
 - Virtual instruments
 - Visuals
 - Word walls
- Tutorial video: [Watch here](#)



DOCUMENTS

- The Documents section holds printable items like PDFs and word processor files.
- All items are listed if you scroll, but the list is very long.
- Best to search by document name or narrow down by category.
- Categories (left menu) include:
 - Flashcards
 - Lyric pages
 - Posters
 - Sheet music
 - Teacher notes
 - Worksheets
 - Assessments
- Tutorial video: [Watch here](#)

Media Category

- Audio
- Flashcards
- Lyric Pages
- Posters
- Production Guide
- Sheet Music
- Teacher Notes
- Teacher Resource
- worksheet
- Worksheets & Assessments

LESSON PLANNING

- Equity & Diversity: Statement + inclusive teaching guide
- Scope & Sequence / Year Plans: Concepts by grade, with/without song lists, editable versions
- Advocacy: Music benefits posters & videos (English & French)
- Substitute Plans: Pre-K–Gr.6, printable & editable
- Curriculum Correlations: Canada (limited provinces) & USA (Nat. Standards, select states)
- I Can Statements: Student-friendly concept posters
- Lesson Plans by Grade: Weekly plans, assessments, indexes, templates, standards correlations
- Tutorial Video: [Watch here](#)

WHAT WE LEARN IN PRE-K MUSIC

ELEMENTS OF MUSIC: PITCH
I can
• show high, medium or low sounds
• show how melodies go up, down or stay the same.

ELEMENTS OF MUSIC: BEAT AND RHYTHM
I can
• tell when there's a beat and when there's no beat.
• I can move to and play a steady beat.

ELEMENTS OF MUSIC: TIMBRE
I can identify and use
• speaking, whispering, calling, and singing voices.
• many classroom instruments when I see them or hear them.
• woods, metals, shakes/scrapes, drums.

ELEMENTS OF MUSIC: FORM
I can
• show phrases.
• tell if phrases are the same or different.
• move to show different sections of the music.

ELEMENTS OF MUSIC: EXPRESSION
I can identify and perform
• loud and quiet
• fast and slow
• smooth or separated

VOCABULARY

beat	woods
rhythm	metals
high/low	shakes/scrapes
loud/quiet	drums
fast/slow	solo
smooth/separated	repeat

CREATE
I can
• create and play patterns using loud/quiet or picture word rhythms.
• improvise melodies (Q/A, Melody Elephant).

PERFORM
I can
• sing, move, and play instruments.
As an Audience I can
• be a good listener.

RESPOND
I can
• tell or show with movement how music makes me feel.

CONNECT
I can
• listen to music and sing songs and tell about the places they're from.

MUSICPLAY THEMES & VARIATIONS



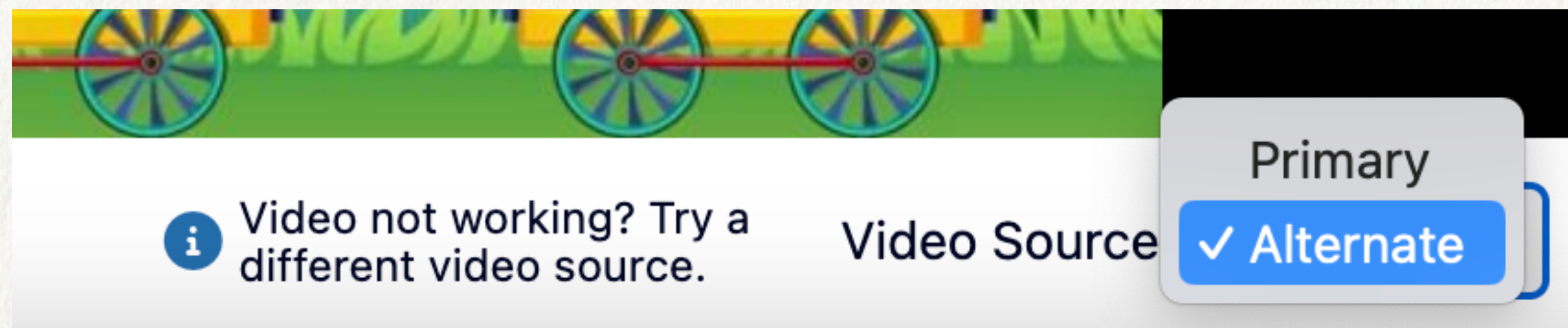
TEACHER TIPS!

ALTERNATE VIDEO SOURCE

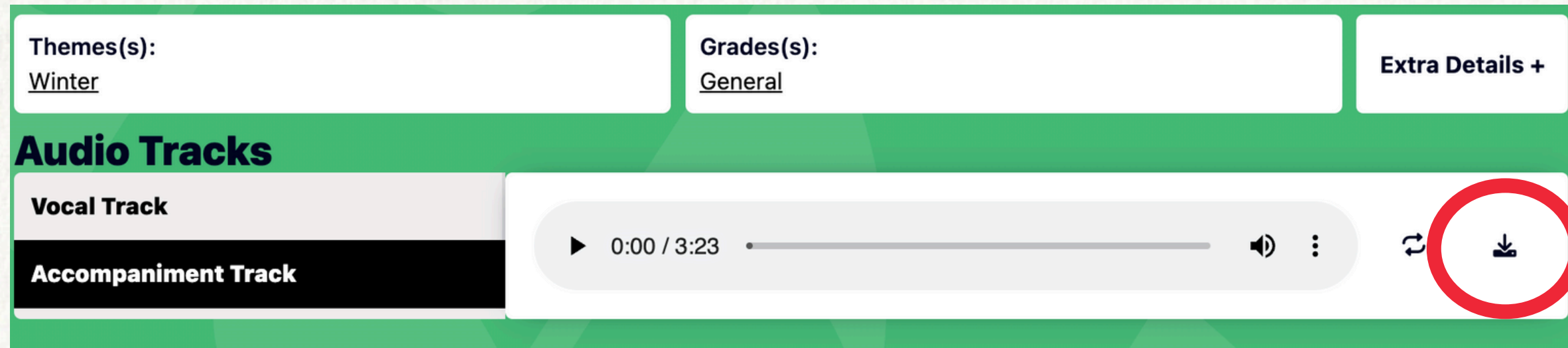


If you see an error message when opening a video:

- Go to the bottom right corner of the video
- Change the source from "Primary" to "Alternate"



DOWNLOADING ACCOMPANIMENT TRACKS



Themes(s): [Winter](#) Grades(s): [General](#) Extra Details +

Audio Tracks

Vocal Track

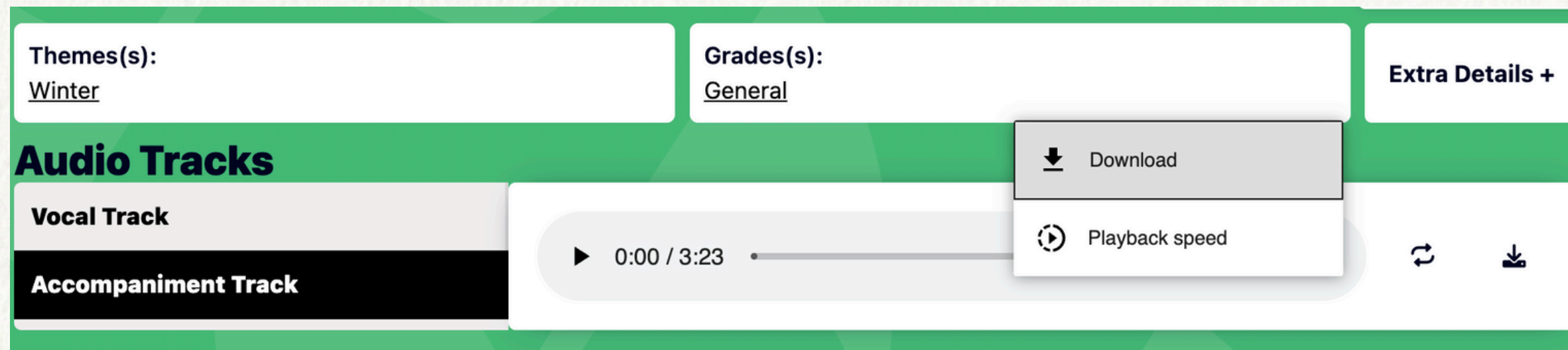
Accompaniment Track

0:00 / 3:23

Download icon (circled in red)

Downloading Accompaniment Tracks:

- Under “Audio Tracks”, select “Accompaniment Track”
- Click the down arrow
- Or, click the three vertical dots and select “Download”



Themes(s): [Winter](#) Grades(s): [General](#) Extra Details +

Audio Tracks

Vocal Track

Accompaniment Track

0:00 / 3:23

Download

Playback speed

VIDEO LOOPING

Video Looping:

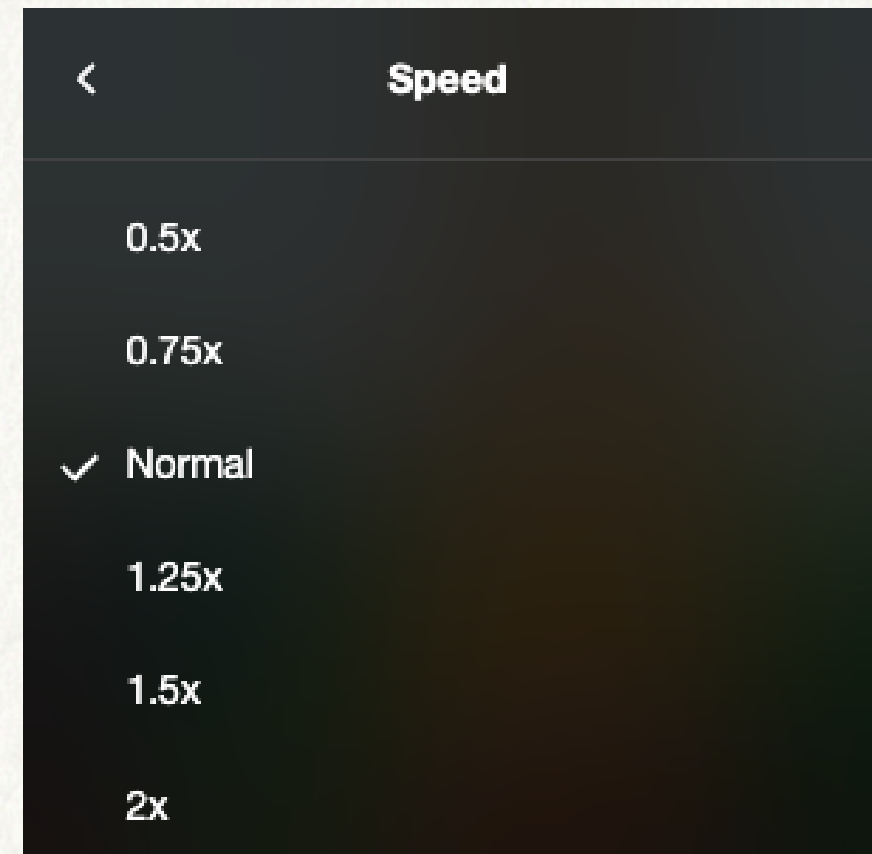
- To repeat a video for a game or activity, click “Enable Loop” in the bottom left of the video menu.



VIDEO SPEED/TEMPO

Video Speed/Tempo:

- Click “Settings” (gear icon).
- Select “Speed”.
- Choose your desired speed.



ZOOM IN AND OUT

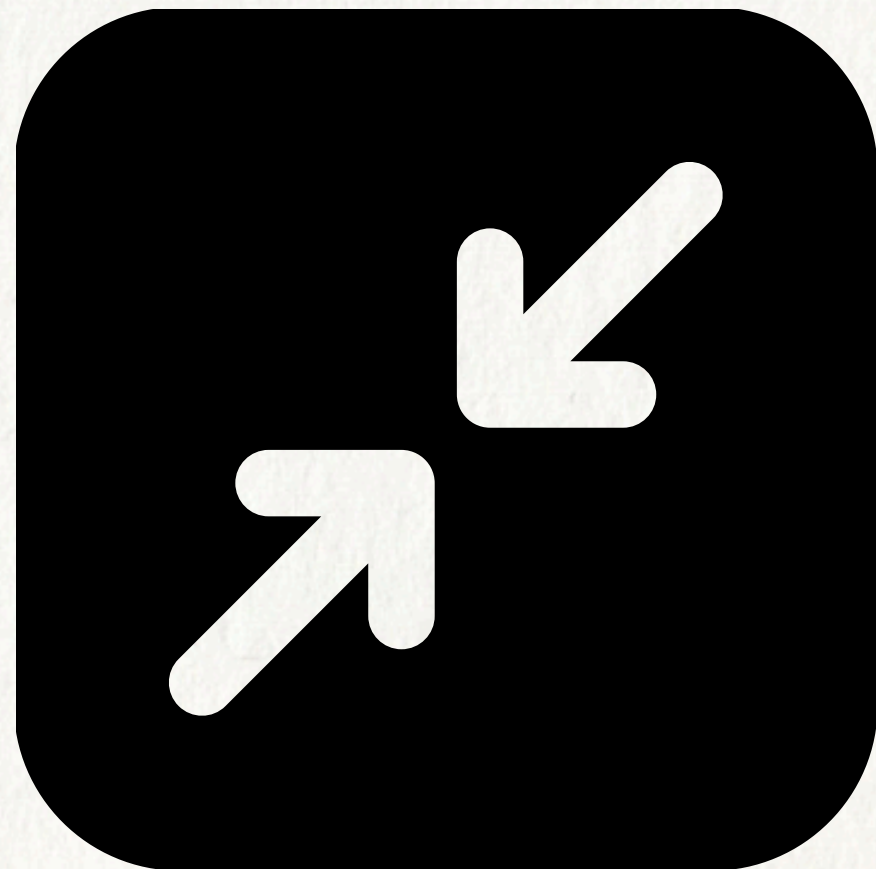


How to Zoom:

Zoom in - press Ctrl + (Cmd on Mac)

Zoom out - press Ctrl - (Cmd on Mac)

Reset - press Ctrl 0 (Cmd on Mac)



TEACHER SUPPORT

Website Support:

- support@musicplay.ca

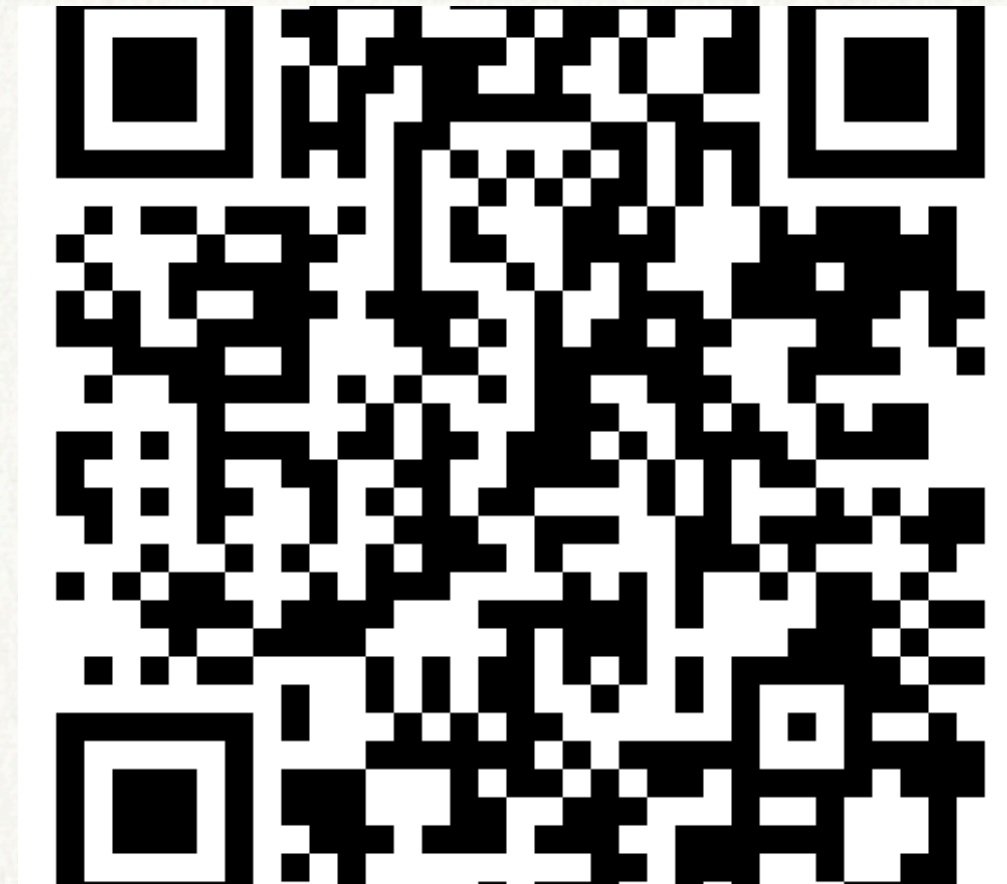


Pedagogical Support:

- stacy@musicplay.ca

QUESTIONS

- **Wednesday Webinars**
- **Musicplay Newsletter**
- **Musicplay Teachers**
- **Facebook**
- **Musicplay YouTube**
- **Musicplay Instagram**



Email: stacy@musicplay.ca
Instagram: [@stacymusicplay](https://www.instagram.com/stacymusicplay)

